

18.08.2017

ISSUE 63

tepav

Employment Monitoring Bulletin

Employment Increased by 70 Thousand in a Month, 409 Thousand in a Year

Using the Social Security Institution (SSI) data for May 2017, the 63rd issue of TEPAV's Employment Monitoring Bulletin indicates that the number of employees in formal employment increased by 3 percent in May 2017 compared to May 2016 and to 14 million 106 thousand. Seasonally adjusted values show that the number of employees in formal employment increased by 70 thousand compared to April 2017.

In May 2017, the number of tradesman and farmers increased by 3,3 percent compared to May 2016 and became 2 million 772 thousand. Considering the seasonally adjusted values, increase in the number of tradesman and farmers was 5 thousand compared to April 2017.

The number of public sector employees became 2 million 971 thousand with the decrease of 3 percent compared to May 2016. Considering the seasonally adjusted values, public sector employee's number decreased by 4 thousand compared to April 2017.

Table 1. Annual and Monthly Change in the numbers of 4/a Number of Employees, 4/b Number of Tradesman and Farmers, 4/c Public Sector Employees; (May 2017)

	Annual Change*	Monthly Change**
4/a Employees in Formal Employment	408.987	70.209
4/b Tradesman and Farmers	88.508	4.655
4/c Public Sector Employees	-93.420	-3.648

* Seasonally *unadjusted* value

** Seasonally *adjusted* value

Source: SGK, TEPAV

Detailed information and data on May 2017 are available in the accompanying Excel document.

te pav

türkiye ekonomi politikaları araştırma vakfı

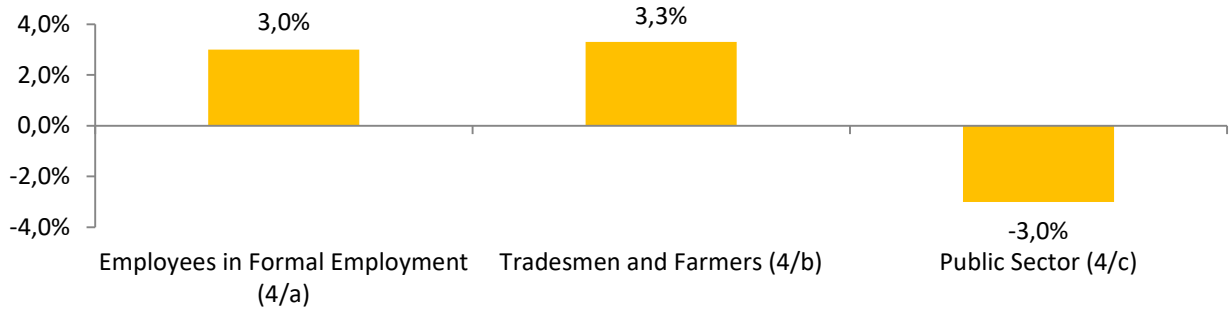
EMPLOYMENT MONITORING BULLETIN

General Evaluation – May 2017

Using the Social Security Institution (SSI) data for May 2017, TEPAV’s Employment Monitoring Bulletin’s 63rd issue analyzes monthly and annual changes in the total formal employment, companies, SME, tradesmen, farmers and public sector employees.

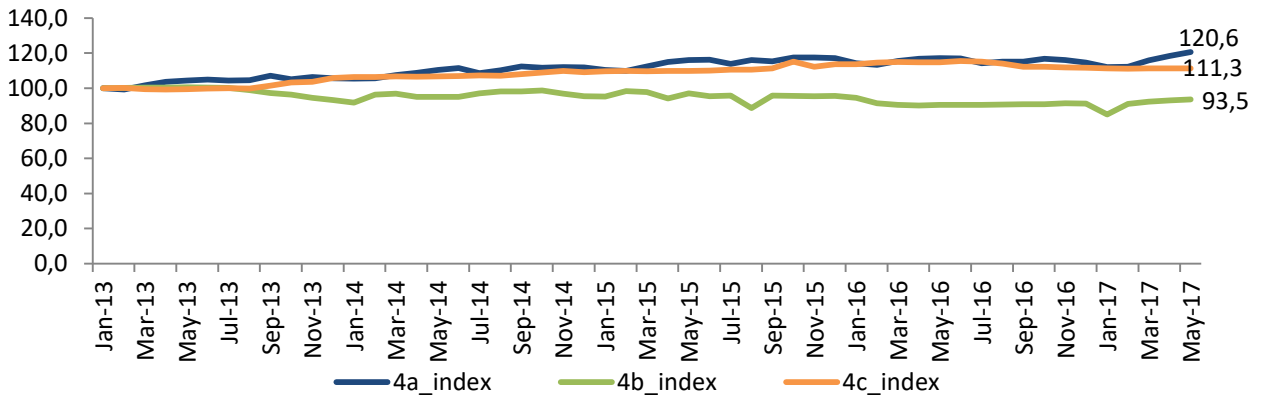
Looking at the changes in the past year, the highest increase in May 2017 is seen in tradesman and farmers with an increase of 3,3 percent. While the number of employees in formal employment increased by 1,3 percent; public employees decreased by 3 percent.

Figure 2. The number of employee change (May 2017 - May 2016)



If the number of employees in formal employment (4/a), self-employed tradesmen and farmers (4/b), public sector employees (4/c) each are taken as equal to 100 in January 2013, the values in May 2017 are 120,6 for employees in formal employment (4/a), 93,5 for self-employed tradesmen and farmers (4/b), and 111,3 for public sector employees (4/c).

Figure 3. The number of employees (January 2013=100)



The Number of Companies Increased in 44 out of 88 Sectors in a Year

The number of companies operating throughout Turkey in May 2017 increased by 2,1 percent (37 thousand) compared to May 2016, to 1 million 784 thousand.

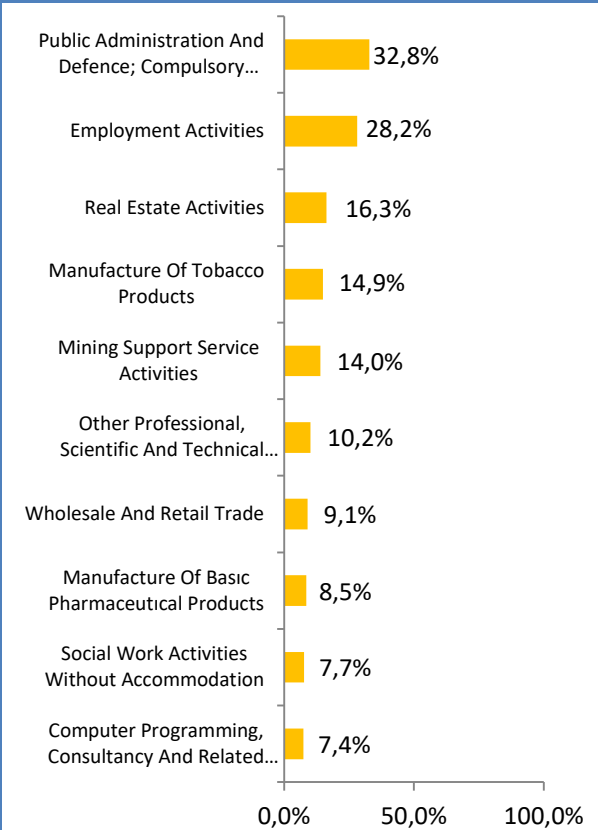
The highest increase took place in retail trade with 11 thousand in comparison to May 2016 followed by real estate activities, wholesale trade, food and beverage service activities and wholesale and retail trade and repair of motor vehicles sectors. Examining the percentage changes, public administration and defense, compulsory social security sector increased by 32,8 percent in one year. This sector is followed by employment activities and real estate sectors.

Table 2. Top 10 Sectors with the Largest Increase In the Number of Companies (May; 2017 - 2016)

Sectors	Annual Change*
Retail Trade	11.226
Real Estate Activities	7.951
Wholesale Trade	7.169
Food and Beverage Service Activities	6.942
Wholesale and Retail Trade and Repair of Motor Vehicles and Motorcycles	4.232
Construction of Buildings	2.739
Legal and Accounting Activities	1.512
Specialised Construction Activities	1.494
Other Personal Service Activities	1.388
Architectural And Engineering Activities	1.064
All Sectors	37.014

* Seasonally unadjusted value
Sorted by annual change

Figure 4. Top 10 Sectors with the Fastest Increase In the Number of Companies (May; 2017 - 2016)



Source: SGK, TEPAV

Detailed information and data on May 2017 are available in the accompanying Excel document

The Number of Companies Increased in All Provinces Except Istanbul

In May 2017, the number of companies increased in all provinces but Istanbul according to May 2016. In Turkey, the number of companies increased by 37 thousand (2,1 percent) in one year. In Istanbul, the number of companies decreased by one thousand in a year.

The largest increase took place in Izmir and Bursa (2 thousand), followed by Konya, Diyarbakır, Kocaeli, Balıkesir and Mersin. The number of companies increased the fastest in Şırnak with 26,5 percent, followed by Hakkari, Ağrı, Mardin and Van.

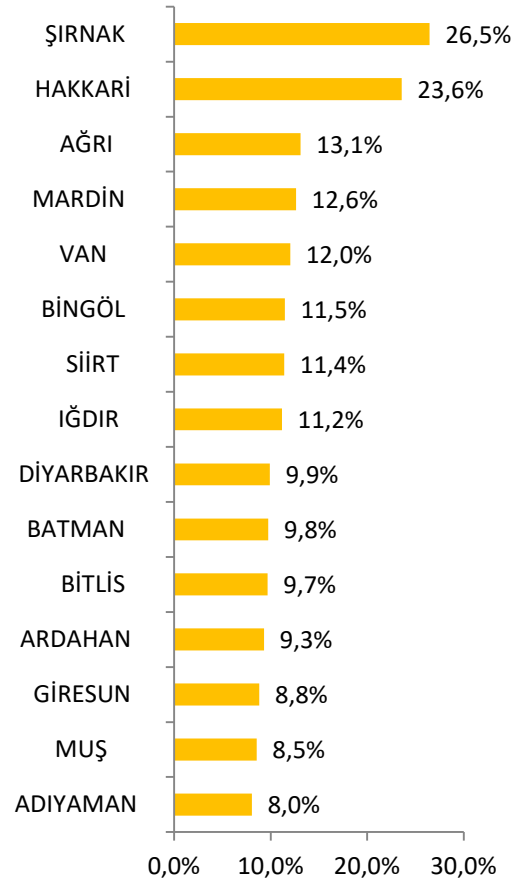
Table 3. Top 15 Provinces with the Largest Increase In the Number of Companies (May; 2017 - 2016)

Provinces	Annual Change*
İzmir	2.112
Bursa	1.872
Konya	1.403
Diyarbakır	1.316
Kocaeli	1.289
Balıkesir	1.170
Mersin	1.127
Trabzon	940
Manisa	918
Van	898
K.Maraş	892
Hatay	875
Tekirdağ	847
Malatya	817
Samsun	808
All Provinces	37.014

* Seasonally unadjusted value
Sorted by annual change

Source: SGK, TEPAV

Figure 5. Top 15 Provinces with the Fastest Increase in the Number of Companies (May; 2017 - 2016)



Detailed information and data on May 2017 are available in the accompanying Excel document

The Number of SMEs Increased by 37 Thousand in a Year

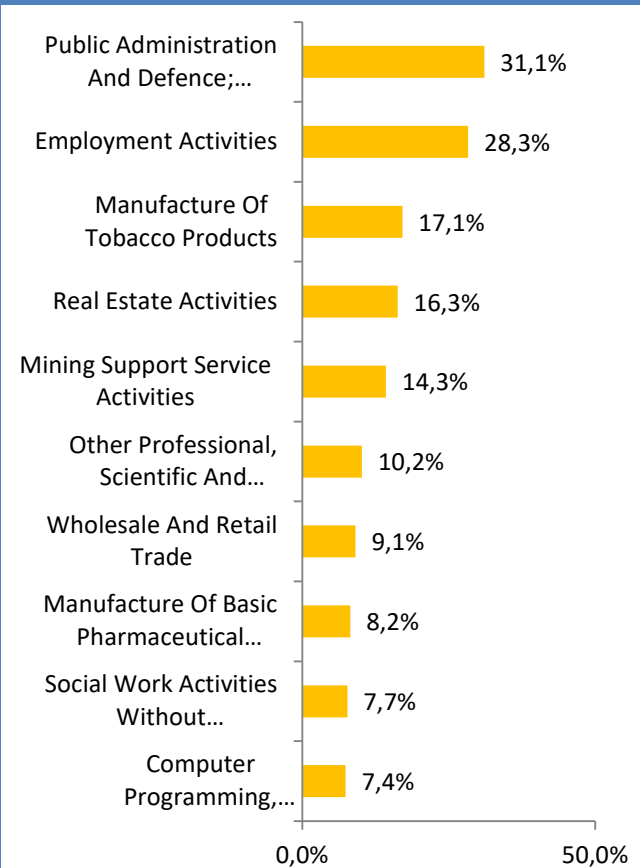
Compared to May 2016, the number of small and medium enterprises (SMEs) increased by 37 thousand in May 2017.

In May 2017, the highest increase took place in İzmir and Bursa with 2 thousand each, followed by Konya, Diyarbakır, Kocaeli, Balıkesir, and Mersin. Sector distribution of the data shows that the fastest increase took place in public administration and defense, compulsory social security sector with 31,1 percent, followed by employment activities, manufacture of tobacco product and real estate activities sectors.

Table 4. Top 15 Provinces with the Largest Increase In the Number of SME (May; 2017 - 2016)

Provinces	Annual Change*
İzmir	2.116
Bursa	1.873
Konya	1.407
Diyarbakır	1.304
Kocaeli	1.278
Balıkesir	1.167
Mersin	1.127
Trabzon	940
Manisa	921
K.Maraş	892
Van	890
Hatay	881
Tekirdağ	836
Malatya	816
Samsun	806
All Provinces	36.999

Figure 4.a Top 15 Provinces with the Fastest Increase in the Number of SME (May; 2017 - 2016)



* Seasonally unadjusted value
Sorted by annual change

Source: SGK, TEPAV

Detailed information and data on May 2017 are available in the accompanying Excel document

