

Thematic Evaluation Study

## **ADB's Support for Achieving the Millennium Development Goals**

### **SUPPLEMENTARY APPENDIXES**

1. ADB's Support for MDGs – Summary Tables
2. Asian Development Fund Tables
3. ADB's Support for MDGs – Sovereign and Nonsovereign Operations
4. ADB's Support for MDGs – Technical Assistance
5. Ratings of MDG Operations
6. Status of MDGs in ADB Countries
7. Resident Mission Questionnaire Results – Summary Table
8. Statistical Analysis of MDGs – A Note on Projection Methodology
9. Official Development Assistance by MDG
10. Actual vs. Expected Performance of ADB's DMCs

Read the [main report](#).

## SUPPLEMENTARY APPENDIX 1: ADB'S SUPPORT FOR MDGS—SUMMARY TABLES

**Table SA1.1: Number of Approved (Sovereign) Operations Supporting MDGs by Year, June 2002–December 2011**

Year	Approvals	Operations with MDG Support	% of Total	Operations with Significant Support	% of Total	Operations with Minor Support	% of Total
2002	79	50	63.3	43	54.4	7	8.9
2003	70	50	71.4	45	64.3	5	7.1
2004	78	58	74.4	46	59.0	12	15.4
2005	91	68	74.7	51	56.0	17	18.7
2006	85	62	72.9	55	64.7	7	8.2
2007	82	52	63.4	43	52.4	9	11.0
2008	93	62	66.7	47	50.5	15	16.1
2009	105	71	67.6	55	52.4	16	15.2
2010	104	76	73.1	56	53.8	20	19.2
2011	91	66	72.5	48	52.7	18	19.8
<b>Total</b>	<b>878</b>	<b>615</b>	<b>70.0</b>	<b>489</b>	<b>55.7</b>	<b>126</b>	<b>14.4</b>

MDG = Millennium Development Goal.

Note: Operations cover ADB loans and grants (including JFPR) approved during the study period.

Sources: IED study team computations based on ADB Loan, TA, Grant, and Equity Approvals Database and UN Millennium Development Goals Indicators (January 2008).

**Table SA1.2: Amount of Approved (Sovereign) Operations Supporting MDGs by Year, June 2002–December 2011**

Year	Total Amount Approved (\$ million)	Operations with MDG Support (\$ million)	% of Total	Operations with Significant Support (\$ million)	% of Total	Estimated Value Operations with Minor Support (\$ million)	% of Total
2002	5,671	1,901	33.5	1,845	32.5	56	1.0
2003	6,588	2,582	39.2	2,533	38.4	49	0.7
2004	5,076	1,635	32.2	1,568	30.9	68	1.3
2005	7,818	2,600	33.3	2,519	32.2	82	1.0
2006	8,344	3,975	47.6	3,903	46.8	72	0.9
2007	10,980	3,475	31.7	3,425	31.2	50	0.5
2008	10,805	3,150	29.2	2,991	27.7	159	1.5
2009	13,301	5,019	37.7	4,496	33.8	524	3.9
2010	9,443	3,691	39.1	3,542	37.5	149	1.6
2011	9,115	4,132	45.3	3,972	43.6	160	1.8
<b>Total</b>	<b>87,142</b>	<b>32,162</b>	<b>36.9</b>	<b>30,793</b>	<b>35.3</b>	<b>1,368</b>	<b>1.6</b>

MDG = Millennium Development Goal.

Note: Operations cover ADB loans and grants (including JFPR) approved during the study period.

Sources: IED study team computations based on ADB Loan, TA, Grant, and Equity Approvals Database and UN Millennium Development Goals Indicators (January 2008).

**Table SA1.3: Number of Approved (Sovereign) Operations Supporting MDGs by Region, June 2002–December 2011**

Region	Approvals	Operations with MDG Support	% of Total	Operations with Significant Support	% of Total	Operations with Minor Support	% of Total
Central and West Asia	190	127	53.7	102	53.7	25	13.2
East Asia	126	100	68.3	86	68.3	14	11.1
Pacific	58	38	43.1	25	43.1	13	22.4
REG	7	5	71.4	5	71.4		
South Asia	226	152	55.8	126	55.8	26	11.5
South East Asia	271	193	53.5	145	53.5	48	17.7
<b>Total</b>	<b>878</b>	<b>615</b>	<b>70.0</b>	<b>489</b>	<b>55.7</b>	<b>126</b>	<b>14.4</b>

MDG = Millennium Development Goal.

Note: REG refers to projects that cover several regions. Operations cover ADB loans and grants (including JFPR) approved during the study period.

Sources: IED study team computations based on ADB Loan, TA, Grant, and Equity Approvals Database and UN Millennium Development Goals Indicators (January 2008).

**Table SA1.4: Total Value of Approved (Sovereign) Operations Supporting MDGs by Region, June 2002–December 2011**

Region	Total Amount Approved (\$ million)	Operations with MDG Support (\$ million)	% of Total	Operations with Significant Support (\$ million)	% of Total	Estimated Value Operations with Minor Support (\$ million)	% of Total
Central and West Asia	21,036	7,216	34.3	6,833	32.5	383	1.8
East Asia	14,268	6,541	45.8	6,502	45.6	39	0.3
Pacific	1,655	476	28.7	458	27.7	17	1.1
REG	32	30	92.0	30	92.0		0.0
South Asia	26,886	9,504	35.3	9,155	34.0	349	1.3
South East Asia	23,265	8,395	36.1	7,815	33.6	579	2.5
<b>Total</b>	<b>87,142</b>	<b>32,162</b>	<b>36.9</b>	<b>30,793</b>	<b>35.3</b>	<b>1,368</b>	<b>1.6</b>

MDG = Millennium Development Goal.

Note: REG refers to projects that cover several regions. Operations cover ADB loans and grants (including JFPR) approved during the study period.

Sources: IED study team computations based on ADB Loan, TA, Grant, and Equity Approvals Database and UN Millennium Development Goals Indicators (January 2008).

**Table SA1.5: Total Number of Approved (Sovereign) Operations Supporting MDGs by Country Classification, June 2002–December 2011**

Country Classification	Approvals	Operations with MDG Support	% of Total	Operations with Significant Support	% of Total	Operations with Minor Support	% of Total
ADF	297	211	71.0	175	58.9	36	12.1
Blend	355	252	71.0	199	56.1	53	14.9
OCR	198	134	67.7	103	52.0	31	15.7
REG	28	18	64.3	12	42.9	6	21.4
<b>Total</b>	<b>878</b>	<b>615</b>	<b>70.0</b>	<b>489</b>	<b>55.7</b>	<b>126</b>	<b>14.4</b>

ADF = Asian Development Fund, OCR = ordinary capital resources, MDG = Millennium Development Goal.

Note: REG refers to projects that cover several regions. Operations cover ADB loans and grants (including JFPR) approved during the study period.

Sources: IED study team computations based on ADB Loan, TA, Grant, and Equity Approvals Database and UN Millennium Development Goals Indicators (January 2008).

**Table SA1.6: Total Value of Approved (Sovereign) Operations Supporting MDGs by Country Classification, June 2002–December 2011**

Country Classification	Total Amount Approved (\$ million)	Operations with MDG Support (\$ million)	% of Total	Operations with Significant Support (\$ million)	% of Total	Estimated Value Operations with Minor Support (\$ million)	% of Total
ADF	8,175	3,335	40.8	3,266	39.9	69	0.8
Blend	42,703	16,631	38.9	15,777	36.9	854	2.0
OCR	35,293	11,967	33.9	11,557	32.7	410	1.2
REG	970	229	23.6	194	20.0	35	3.6
<b>Total</b>	<b>87,142</b>	<b>32,162</b>	<b>36.9</b>	<b>30,793</b>	<b>35.3</b>	<b>1,368</b>	<b>1.6</b>

ADF = Asian Development Fund, OCR = ordinary capital resources, MDG = Millennium Development Goal.

Note: REG refers to projects that cover several regions. Operations cover ADB loans and grants (including JFPR) approved during the study period.

Sources: IED study team computations based on ADB Loan, TA, Grant, and Equity Approvals Database and UN MDG Indicators (January 2008).

**Table SA1.7: Total Number of Approved (Sovereign) Operations Supporting MDGs by Sector, June 2002–December 2011**

Sector	Approvals	with MDG Support	% of Total	Operations with Significant Support	% of Total	Operations with Minor Support	% of Total
ANR	142	134	94.4	134	94.4		0.0
Education	68	65	95.6	64	94.1	1	
Energy	86	48	55.8	37	43.0	11	12.8
Finance	58	24	41.4	24	41.4		0.0
HSP	57	55	96.5	54	94.7	1	
Industry & Trade	26	21	80.8	18	69.2	3	11.5
Multisector	93	67	72.0	46	49.5	21	22.6
PSM	81	34	42.0	5	6.2	29	35.8
Transport & ICT	173	75	43.4	16	9.2	59	34.1
WOMIS	94	92	97.9	91	96.8	1	
<b>Total</b>	<b>878</b>	<b>615</b>	<b>70.0</b>	<b>489</b>	<b>55.7</b>	<b>126</b>	<b>14.4</b>

ANR = agricultural and natural resources sector, HSP = health and social protection, ICT = information and communication technology, MDG = Millennium Development Goal, PSM = public sector management, WOMIS = water and other municipal infrastructure services.

Note: Operations cover ADB loans and grants (including JFPR) approved during the study period.

Sources: IED study team computations based on ADB Loan, TA, Grant, and Equity Approvals Database and UN MDG Indicators (January 2008).

**Table SA1.8: Total Value of Approved (Sovereign) Operations Supporting MDGs by Sector, June 2002–December 2011**

Sector	Total Amount Approved (\$ million)	Operations with MDG Support (\$ million)	% of Total	Operations with Significant Support (\$ million)	% of Total	Estimated Value Operations with Minor Support (\$ million)	% of Total
ANR	5,559	5,318	95.7	5,318	95.7		
Education	2,887	2,661	92.2	2,651	91.8	10	0.3
Energy	14,129	4,810	34.0	4,709	33.3	101	0.7
Finance	5,325	2,330	43.8	2,330	43.8		
HSP	1,315	1,309	99.5	1,308	99.5	0	0.0
Industry & Trade	896	768	85.7	765	85.4	3	0.4
Multisector	11,414	5,503	48.2	5,089	44.6	415	3.6
PSM	12,355	1,670	13.5	925	7.5	745	6.0
Transport & ICT	26,954	1,684	6.2	1,594	5.9	90	0.3
WOMIS	6,308	6,109	96.8	6,105	96.8	5	0.1
<b>Total</b>	<b>87,142</b>	<b>32,162</b>	<b>36.9</b>	<b>30,793</b>	<b>35.3</b>	<b>1,368</b>	<b>1.6</b>

ANR = agricultural and natural resources sector, HSP = health and social protection, ICT = information and communication technology, MDG = Millennium Development Goal, PSM = public sector management, WOMIS = water and other municipal infrastructure services.

Note: Operations cover ADB loans and grants (including JFPR) approved during the study period.

Sources: IED study team computations based on ADB Loan, TA, Grant, and Equity Approvals Database and UN MDG Indicators (January 2008).

**Table SA1.9: Total Number of Approved (Sovereign) Operations by MDG, June 2002–December 2011**

MDG	Operations with Significant Support (A)	% of Approvals	Operations with Minor Support (B)	% of Approvals	Total (A + B)	% of Approvals
MDG 1	188	21.4	28	3.2	216	24.6
MDG 2	36	4.1	28	3.2	64	7.3
MDG 3	59	6.7	79	9.0	138	15.7
MDGs 4 and 5	45	5.1	31	3.5	76	8.7
MDG 6	10	1.1	73	8.3	83	9.5
MDG 7	209	23.8	56	6.4	265	30.2
MDG 7C	104	11.8	27	3.1	131	14.9

MDG = Millennium Development Goal.

Note: Operations cover ADB loans and grants (including JFPR) approved during the study period.

Sources: IED study team computations based on ADB Loan, TA, Grant, and Equity Approvals Database and UN MDG Indicators (January 2008).

**Table SA1.10: Total Value of Approved (Sovereign) Operations by MDG, June 2002–December 2011**

MDG	Operations with Significant Support (\$ Million) (A)	% of Total Amount Approved	Operations with Minor Support (\$ Million) (B)	% of Total Amount Approved	Total (A + B)	% of Total Amount Approved
MDG 1	9,394	10.8	648	0.7	10,043	11.5
MDG 2	1,697	1.9	453	0.5	2,150	2.5
MDG 3	2,643	3.0	975	1.1	3,618	4.2
MDGs 4 and 5	1,214	1.4	484	0.6	1,698	1.9
MDG 6	240	0.3	69	0.1	309	0.4
MDG 7	16,430	18.9	905	1.0	17,335	19.9
MDG 7C	7,303	8.4	609	0.7	7,912	9.1

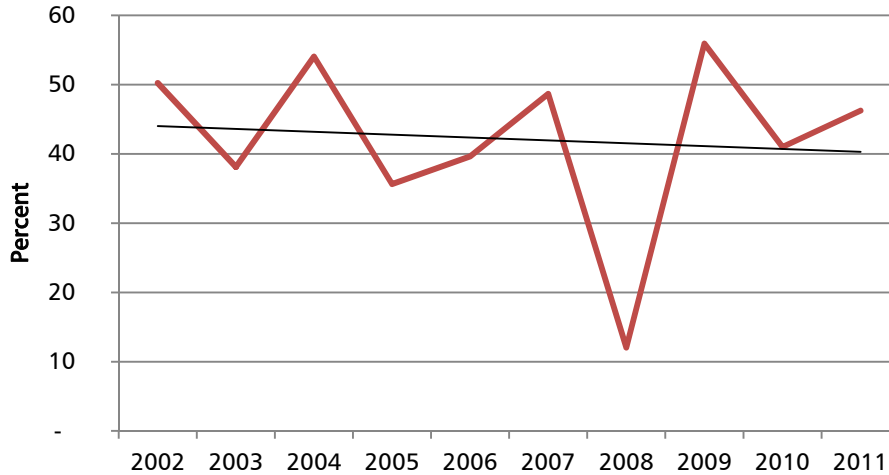
MDG = Millennium Development Goal.

Note: Operations cover ADB loans and grants (including JFPR) approved during the study period.

Sources: IED study team computations based on ADB Loan, TA, Grant, and Equity Approvals Database and UN MDG Indicators (January 2008).

## SUPPLEMENTARY APPENDIX 2: ASIAN DEVELOPMENT FUND TABLES

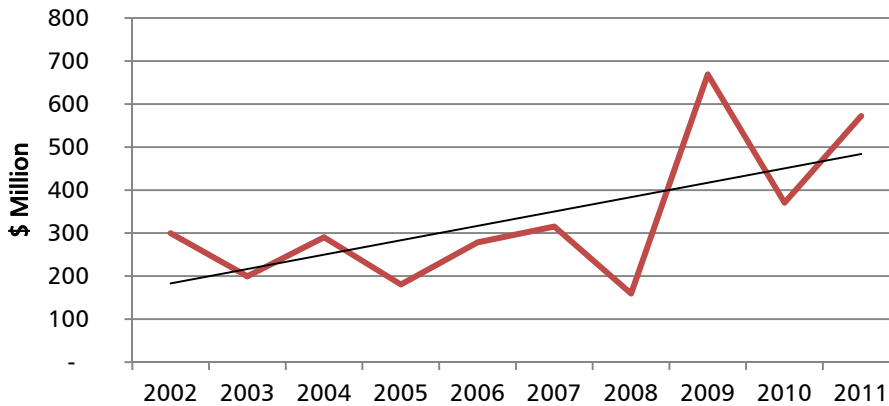
Figure SA2.1 Percentage of MDG Support to ADF Countries



ADB = Asian Development Fund, MDG = Millennium Development Goal.

Sources: IED study team computations based on ADB Loan, TA, Grant, and Equity Approvals Database and UN MDG Indicators (January 2008).

Figure SA2.2: Total Amount of MDG Support to ADF Countries



ADB = Asian Development Fund, MDG = Millennium Development Goal

Sources: IED study team computations based on ADB Loan, TA, Grant, and Equity Approvals Database and UN MDG Indicators (January 2008).

**Table SA2.1: Total and Percent of MDG Support to ADF-Only Countries, 2002–2011 (\$ Million)**

Countries	Total ADB Approval	Significant	Minor	Total MDG	% of Total
Nepal	1,615	1,191	22	1,213	75
Lao PDR	716	470	1	470	66
Kiribati	34	22		22	64
Vanuatu	59	36	1	37	63
Mongolia	526	299	3	302	57
Tuvalu	7	4		4	54
Cambodia	949	418	10	428	45
Samoa	122	44	4	48	40
Timor-Leste	88	29	0	29	33
Tajikistan	599	189	7	195	33
Bhutan	287	92		92	32
Tonga	44	13		13	29
Kyrgyz	464	92	15	107	23
Maldives	89	21		21	23
Afghanistan	2,473	346	3	349	14
Solomon Islands	102		4	4	3
<b>Total</b>	<b>8,175</b>	<b>3,266</b>	<b>69</b>	<b>3,334</b>	<b>41</b>

ADB = Asian Development Fund, MDG = Millennium Development Goal.

Note: Countries were classified based on the eighth replenishment of the ADF (2005-2008).

Sources: IED study team computations based on ADB Loan, TA, Grant, and Equity Approvals Database and UN MDG Indicators (January 2008).

**Table SA2.2: Total and Percent of MDG Support to Blend Countries, 2002–2011 (\$ Million)**

Countries	Total ADB Approval	Value Operations with Significant Support	Value Operations with Minor	Total MDG	% of Total
Federated States of Micronesia	20	20		20	100
Palau	16	16		16	100
Uzbekistan	2,264	1,233	2	1,235	55
Viet Nam	8,000	3,702	144	3,846	48
Bangladesh	7,136	3,131	125	3,256	46
Sri Lanka	2,823	1,136	57	1,193	42
Georgia	894	335		335	37
Armenia	443	165		165	37
Pakistan	10,402	3,361	333	3,694	36
Azerbaijan	1,327	427	12	439	33
Indonesia	8,339	2,081	156	2,237	27
Papua New Guinea	986	168	8	175	18
Republic of Marshall Islands	18	2		2	10
Cook Islands	34	-		-	-
<b>Total</b>	<b>42,703</b>	<b>15,777</b>	<b>837</b>	<b>16,614</b>	<b>39</b>

ADB = Asian Development Bank, MDG = Millennium Development Goal.

Note: Countries were classified based on the eighth replenishment of the ADF (2005-2008).

Sources: IED study team computations based on ADB Loan, TA, Grant, and Equity Approvals Database and UN MDG Indicators (January 2008).

## SUPPLEMENTARY APPENDIX 3: ADB'S SUPPORT FOR MDGS—SOVEREIGN AND NONSOVEREIGN OPERATIONS

**Table SA3: Summary of ADB's MDG-Related Operations  
Approved June 2002–December 2011**

Millennium Development Goal	Sovereign Operations (A)				Non-Sovereign Operations (B)				Total (A + B)			
	No.	%	Value (\$M)	%	No.	%	Value (\$M)	%	No.	%	Value (\$M)	%
<b>INCOME POVERTY</b>												
MDG 1A: Income Poverty	183	20.8	8,971	10.3					183	17.9	8,971	9.0
MDG 1B: Unemployment	50	5.7	1,450	1.7	8	5.4	1,634	13.5	58	5.7	3,084	3.1
<b>NON-INCOME POVERTY</b>												
<b>Human Development</b>												
MDG 1C: Hunger	17	1.9	769	0.9					17	1.7	769	0.8
MDG 2: Education	64	7.3	2,150	2.5					64	6.2	2,150	2.2
MDG 3: Gender	157	17.9	3,675	4.2					157	15.3	3,675	3.7
MDGs 4 and 5: Maternal/infant mortality	76	8.7	1,698	1.9					76	7.4	1,698	1.7
MDG 6: HIV/AIDS and other diseases	83	9.5	309	0.4					83	8.1	309	0.3
<b>ENVIRONMENTAL SUSTAINABILITY</b>												
<b>Global Public Goods</b>												
MDG 7A: Sustainable Development	109	12.4	8,293	9.5	30	20.4	3,294	27.3	139	13.6	11,587	11.7
CO <sub>2</sub> emission reduction	61	6.9	6,224	7.1	30	20.4	3,294	27.3	91	8.9	9,518	9.6
MDG 7B: Biodiversity conservation	11	1.3	423	0.5					11	1.1	423	0.4
MDG 7 Others	21	2.4	1,018	1.2	1	0.7	200	1.7	22	2.1	1,218	1.2
<b>Local Public Goods</b>												
MDG 7C: Water Supply and Sanitation	144	16.4	8,342	9.6	5	3.4	426	3.5	149	14.5	8,768	8.8
MDG 7D: Slums	18	2.1	193	0.2					18	1.8	193	0.2
<b>TOTAL MDG</b>	<b>615</b>	<b>70.0</b>	<b>32,162</b>	<b>36.9</b>	<b>43</b>	<b>29.3</b>	<b>5,355</b>	<b>44.3</b>	<b>658</b>	<b>64.2</b>	<b>37,517</b>	<b>37.8</b>

% = percent of total approved, \$M = USD million, HIV/AIDS = human immunodeficiency virus / acquired immunodeficiency syndrome, CO<sub>2</sub> = carbon dioxide, MDG = Millennium Development Goal, and No. = number.

Notes:

1. Sovereign operations include all loans and grants. TA operations are not included. Values refer to the approved loan or grant amount. For the non-sovereign operations, values also included equities, B-loans and guarantees.
2. Numbers refer to the project count. MFFs and cluster loans were counted as 1 project.
3. All supplementary loan amounts are added to the main loan and is reflected in the year when main loan was approved. Values of cluster loans are added up and reflected in the year when the first loan was approved. Values for MFFs only include the approved tranches and are reflected in the year when the MFF was approved.
4. Numbers and values refer to combined significant and minor operations.
5. CO<sub>2</sub> emission reduction is one of the indicators under Target 7A: Sustainable Development. MDG 7 Others includes support for land degradation, flood management, and climate adaptation.

Sources: Computations made by IED study team, based on ADB Loans, TAs, Grants, Equity Approvals Database and UN MDG Indicators (January 2008).



## SUPPLEMENTARY APPENDIX 4: ADB'S SUPPORT FOR MDGS—TECHNICAL ASSISTANCE

**Table SA4.1: Number and Amount of Approved Technical Assistance Supporting MDGs by Year, June 2002–December 2011**

Year	No.	Total No. of TAs with MDG Support	% of Total Approvals	Total Amount Approved (\$ million)	Total Amount of TAs with MDG Support (\$ million)	% of Total Amount Approved
2002	167	33	19.8	85	17	20.1
2003	234	74	31.6	136	56	41.3
2004	234	91	38.9	152	78	51.0
2005	208	69	33.2	177	83	46.8
2006	171	48	28.1	196	77	39.4
2007	146	37	25.3	221	38	17.2
2008	174	44	25.3	200	48	23.9
2009	187	58	31.0	193	59	30.8
2010	222	67	30.2	265	119	44.9
2011	204	67	32.8	244	108	44.3
<b>Total</b>	<b>1,947</b>	<b>588</b>	<b>30.2</b>	<b>1,868</b>	<b>683</b>	<b>36.6</b>

MDG = Millennium Development Goals, No. = number of approvals, TA = technical assistance

Sources: IED study team computations based on ADB Loan, TA, Grant, and Equity Approvals Database and UN MDG Indicators (January 2008).

**Table SA4.2: Number and Amount of Approved Technical Assistance by MDG June 2002–December 2011**

MDG	No. of TAs with MDG Support	% of Total No. of Approvals	Total Value of TAs with MDG Support (\$ million)	% of Total Amount Approved
MDG 1	176	9.0	145.2	7.8
MDG 2	42	2.2	96.6	5.2
MDG 3	91	4.7	86.2	4.6
MDGs 4 and 5	52	2.7	50.6	2.7
MDG 6	32	1.6	59.0	3.2
MDG 7	308	15.8	376.9	20.2

MDG = Millennium Development Goals, No. = number of approvals, TA = technical assistance

Sources: IED study team computations based on ADB Loan, TA, Grant, and Equity Approvals Database and UN MDG Indicators (January 2008).

**Table SA4.3: Overall Rating of Completed Technical Assistance Supporting MDGs**

Year	Total No.	All ADB rated TAs						TAs supporting MDG						
		HS/S		LS		US		HS/S		LS		US		
		No.	%	No.	%	No.	%	Total No.	No.	%	No.	%	No.	%
2002	116	92	79	21	18	3	3	24	20	83	4	17		
2003	166	132	80	30	18	4	2	51	41	80	10	20		
2004	184	145	79	36	20	3	2	75	55	73	19	25	1	1
2005	140	109	78	29	21	2	1	50	44	88	6	12		
2006	105	79	75	23	22	3	3	35	28	80	7	20		
2007	61	48	79	13	21			18	16	89	2	11		
2008	36	34	94	2	6			10	9	90	1	10		
2009	18	17	94	1	6			5	4	80	1	20		

**Go to TOP**

Year	All ADB rated TAs							TAs supporting MDG						
	Total No.	HS/S		LS		US		Total No.	HS/S		LS		US	
		No.	%	No.	%	No.	%		No.	%	No.	%	No.	%
2010	5	5	100					3	3	100				
2011								-						
<b>Total</b>	<b>831</b>	<b>661</b>	<b>80</b>	<b>155</b>	<b>19</b>	<b>15</b>	<b>2</b>	<b>271</b>	<b>220</b>	<b>81</b>	<b>50</b>	<b>18</b>	<b>1</b>	<b>0</b>

% = number of operations out of total, HS/S = highly successful/successful, LS = less than successful, MDG = Millennium Development Goal, No. = number of operations, and US = unsuccessful.

Sources: IED study team computations based on ADB Loan, TA, Grant, and Equity Approvals Database, TA Completion Reports and UN MDG Indicators (January 2008).

**Go to TOP**

## SUPPLEMENTARY APPENDIX 5: RATINGS OF MDG OPERATIONS

**Table SA5.1: Overall Rating of Completed (Sovereign) Operations Supporting MDGs, by MDG**

MDGs	Total Significant and Minor Operations								Significant Operations								Minor Operations							
	Total	HS/S		LS		US		Total	HS/GS/S		LS		US		Total	HS/GS/S		LS		US				
		No.	%	No.	%	No.	%		No.	%	No.	%	No.	%		No.	%	No.	%	No.	%			
MDG 1 All	57	39	68	9	16	9	16	47	30	64	8	17	9	19	10	9	90	1	10	-	-			
MDG 1A	46	31	67	8	17	7	15	36	22	61	7	19	7	19	10	9	90	1	10	-	-			
MDG 1B	17	10	59	3	18	4	24	17	10	59	3	18	4	24	-	-	-	-	-	-	-			
MDG 1C	15	9	60	2	13	4	27	15	9	60	2	13	4	27	-	-	-	-	-	-	-			
MDG 2	22	15	68	5	23	2	9	10	7	70	2	20	1	10	12	8	67	3	25	1	8			
MDG 3	43	25	58	10	23	8	19	11	6	55	1	9	4	36	32	19	59	9	28	4	13			
MDGs 4 and 5	18	14	78	3	17	1	6	6	6	100	-	-	-	-	12	8	67	3	25	1	8			
MDG 6	19	17	89	1	5	1	5	1	1	100	-	-	-	-	18	16	89	1	6	1	6			
MDG 7 All	53	40	75	9	17	4	8	36	28	78	6	17	2	6	17	12	71	3	18	2	12			
MDG 7A	14	13	93	1	7	-	-	10	9	90	1	10	-	-	4	4	100	-	-	-	-			
MDG 7B	2	2	100	-	-	-	-	2	2	100	-	-	-	-	-	-	-	-	-	-	-			
MDG 7C	36	24	67	8	22	4	11	22	15	68	5	23	2	9	14	9	64	3	21	2	14			
MDG 7D	5	4	80	1	20	-	-	3	2	67	1	33	-	-	2	2	100	-	-	-	-			
MDG 7 others	3	3	100	-	-	-	-	3	3	100	-	-	-	-	-	-	-	-	-	-	-			
<b>Total MDG</b>	<b>138</b>	<b>103</b>	<b>75</b>	<b>21</b>	<b>15</b>	<b>14</b>	<b>10</b>	<b>101</b>	<b>73</b>	<b>72</b>	<b>16</b>	<b>16</b>	<b>12</b>	<b>12</b>	<b>37</b>	<b>30</b>	<b>81</b>	<b>5</b>	<b>14</b>	<b>2</b>	<b>5</b>			
<b>Total Non-MDG</b>	<b>69</b>	<b>49</b>	<b>71</b>	<b>18</b>	<b>26</b>	<b>2</b>	<b>3</b>																	
<b>Total ADB</b>	<b>207</b>	<b>152</b>	<b>73</b>	<b>39</b>	<b>19</b>	<b>16</b>	<b>8</b>																	

% = number of operations out of total, HS/S = highly successful/successful, LS = less than successful, MDG = Millennium Development Goal, No. = number of operations, and US = unsuccessful.

Note: Only includes sovereign operations, excluding TAs. Final ratings are used (i.e. PPER and PVR ratings supersede PCR ratings).

Sources: IED study team computations based on ADB Loan, TA, Grant, and Equity Approvals Database, RRP, PCR, PVR, PPER, and UN MDG Indicators (January 2008).

**Go to Top**

**Table SA5.2: Overall Rating of Completed (Sovereign) Operations Supporting MDGs, by Sector**

Sector	Total ADB Operations							Total Operations Supporting MDGs						
	Total	HS/S		LS		US		Total	HS/S		LS		US	
	No.	%	No.	%	No.	%	No.	%	No.	%	No.	%	No.	%
ANR	26	19	73	3	12	4	15	25	18	72	3	12	4	16
Education	17	9	53	5	29	3	18	16	9	56	4	25	3	19
Energy	14	12	86	1	7	1	7	6	6	100				0
Finance	19	9	47	9	47	1	5	6	3	50	2	33	1	17
HSP	7	7	100					7	7	100				0
Industry & Trade	12	9	75	1	8	2	17	10	7	70	1	10	2	20
Multisector	28	24	86	4	14			17	14	82	3	18		0
PSM	29	19	66	8	28	2	7	16	12	75	2	13	2	13
Transport & ICT	32	29	91	2	6	1	3	12	12	100				0
WOMIS	23	15	65	6	26	2	9	23	15	65	6	26	2	9
<b>Total</b>	<b>207</b>	<b>152</b>	<b>73</b>	<b>39</b>	<b>19</b>	<b>16</b>	<b>8</b>	<b>138</b>	<b>103</b>	<b>75</b>	<b>21</b>	<b>15</b>	<b>14</b>	<b>10</b>

% = number of operations out of total, ANR = agricultural and natural resources sector, HSP = health and social protection, ICT = information and communication technology, MDG = Millennium Development Goal, No. = number of operations, PSM = public sector management, WOMIS = water and other municipal infrastructure services.

Note: Only includes sovereign operations, excluding TAs. Final ratings are used (i.e., PPER and PVR ratings supersede PCR ratings).

Sources: IED study team computations based on ADB Loan, TA, Grant, and Equity Approvals Database, PCRs, PPERs, PVRs, RRP, and UN MDG Indicators (January 2008).

**Go to TOP**

**Table SA5.3: Overall Rating of Completed (Sovereign) Operations Supporting MDGs, by Country**

Country	Total Sovereign Operations							Total Operations Supporting the MDGs							
	Total	HS/S		LS		US		Total	HS/S		LS		US		
	No.	%	No.	%	No.	%	No.	%	No.	%	No.	%	No.	%	
Afghanistan	8	5	63	3	38				1		1	100			
Armenia	2	2	100						1	1	100				
Azerbaijan	3	2	67	1	33				3	2	67	1	33		
Bangladesh	8	8	100						5	5	100				
Bhutan	1	1	100												
Cambodia	12	10	83	2	17				8	6	75	2	25		
Cook Islands	1	1	100												
Fiji	1					1	100		1				1	100	
FSM															
Georgia	4	4	100						2	2	100				
India	8	6	75	1	13	1	13		2						
Indonesia	14	13	93			1	7		9	8	89		1	11	
Kazakhstan	2	1	50	1	50				2	1	50	1	50		
Kyrgyz Republic	5	3	60	1	20	1	20		3	2	67		1	33	
Kiribati															
Lao PDR	7	5	71	2	29				4	4	100				
Maldives	2	2	100							1					
Mongolia	6	3	50	3	50				4	3	75	1	25		
Nepal	7	6	86	1	14				6	6	100				
Pakistan	33	10	30	12	36	11	33		27	9	33	7	26	11	41
Palau															
Philippines	9	7	78	2	22				6	4	67	2	33		
PNG	1			1	100				1			1	100		
PRC	19	19	100						13	13	100				
REG	4	4	100						1	1	100				
RMI	1					1	100								
Samoa	1	1	100							1					
Solomon Islands	2	2	100						2	2	100				
Sri Lanka	13	8	62	5	38				8	6	75	2	25		
Tajikistan	8	8	100						7	7	100				
Thailand															
Timor Leste	1	1	100						1	1	100				
Turkmenistan															
Tonga															
Tuvalu	2	1		1	50				1			1	100		
Uzbekistan	8	6	75	2	25				8	6	75	2	25		
Vanuatu															
Viet Nam	14	13	93	1	7				10	10	100				
<b>Total</b>	<b>207</b>	<b>152</b>	<b>73</b>	<b>39</b>	<b>19</b>	<b>16</b>	<b>8</b>	<b>138</b>	<b>103</b>	<b>75</b>	<b>21</b>	<b>15</b>	<b>14</b>	<b>10</b>	

% = number of operations out of total, HS/S = highly successful/successful, LS = less successful, MDG = Millennium Development Goal, PDR = People's Democratic Republic, PNG = Papua New Guinea, PRC = People's Republic of China, REG = Regional, RMI = Republic of Marshall Islands, US = unsuccessful.

Note: Only includes sovereign operations, excluding TAs. Final ratings are used (i.e. PPER and PVR ratings supersede PCR ratings).

Source: IED study team computations based on ADB Loan, TA, Grant, and Equity Approvals Database, RRs, PPERs, and PVRs.

## SUPPLEMENTARY APPENDIX 6: STATUS OF MDGS IN ADB COUNTRIES

Indicators	Earliest Data	Year	2005 Data	Latest Data	Year	2015 Cutoff Value <sup>a</sup>	2015 Projection	Progress	Target Achieved	
<b>Goal 1: Eradicate extreme poverty and hunger</b>										
1	Population living on less than \$1.25 (PPP) a day (%)	56.18	1990	27.07	20.51	2010	28.09	16.47	Early achiever	Yes
2	Children under 5 moderately or severely underweight (%)	33.44	1990	26.38	24.80	2008	16.72	21.33	Slow	No
<b>Goal 2: Achieve universal primary education</b>										
3	Total net enrollment ratio in primary education, both sexes	73.73	1991	93.07	95.43	2010	95.00	96.47	Early achiever	Yes
4	Pupils starting grade 1 who reach last grade of primary, both sexes (%)	76.56	1999	76.48	77.49	2010	95.00	78.99	Slow	No
5	Primary education completion rate, both sexes (%)	70.42	1991	92.67	96.71	2010	95.00	97.55	Early achiever	Yes
<b>Goal 3: Promote gender equality and empower women</b>										
6	Gender parity index in primary level enrollment	0.84	1991	0.96	1.00	2010	0.95	1.07	Early achiever	Yes
7	Gender parity index in secondary level enrollment	0.70	1991	0.91	0.97	2010	0.95	1.09	Early achiever	Yes
8	Gender parity index in tertiary level enrollment	0.60	1991	0.82	0.92	2010	0.95	1.03	Early achiever	Yes
9	Women in wage employment in the nonagricultural sector (%)	27.60	1990	30.03	31.26	2010	Increase	32.55	On track	Yes
<b>Goal 4: Reduce child mortality</b>										
10	Children under-5 mortality rate per 1,000 live births	87.53	1990	55.67	44.52	2011	29.18	39.66	Slow	No
11	Infant mortality rate (0–1 year) per 1,000 live births	63.74	1990	42.82	35.06	2011	21.25	31.80	Slow	No
<b>Goal 5: Improve maternal health</b>										
12	Maternal mortality ratio (per 100,000 live births)	412.08	1990	210.90	158.22	2010	103.02	127.59	Slow	No
<b>Goal 6: Combat HIV/AIDS, malaria and other diseases</b>										
13	Adults (15+) living with HIV (number, million)	0.38	1990	1.42	2.51	2011	Reverse the trend	...		

**Go to Top**

Indicators	Earliest Data	Year	2005 Data	Latest Data	Year	2015 Cutoff Value <sup>a</sup>	2015 Projection	Progress	Target Achieved
14 Women (15+) living with HIV (number, million)	0.06	1990	0.45	0.79	2011	Reverse the trend	...		
15 Tuberculosis prevalence rate per 100,000 population	366.63	1990	281.63	224.94	2010	Reverse the trend	156.24	Early achiever	Yes
16 Tuberculosis death rate per 100,000 population	34.11	1990	25.04	19.30	2010	Reverse the Trend	14.04	Early achiever	Yes
<b>Goal 7: Ensure environmental sustainability</b>									
17 Land area covered by forest (%)	22.17	1990	22.40	22.80	2011	Reverse the trend	23.34	Early achiever	Yes
18 Protected area to total surface area (%)	7.52	1990	10.12	11.24	2011	Reverse the trend	12.19	Early achiever	Yes
19 Consumption of ozone-depleting CFCs (ODP metric tons)	64,424.49	1990	21,909.12	359.60	2009	Reverse the trend	0.00	Early achiever	Yes
20 CO <sub>2</sub> emissions (metric tons per capita)	1.33	1990	2.54	3.19	2009	...	3.13		
21 Population using improved drinking water source, urban (%)	92.46	1990	95.62	96.41	2010	96.23	96.77	Early achiever	Yes
22 Population using improved drinking water source, rural (%)	68.93	1990	79.84	85.89	2010	84.46	88.00	Early achiever	Yes
23 Population using improved sanitation facilities, urban (%)	55.71	1990	67.04	70.86	2010	77.86	73.80	Slow	No
24 Population using improved sanitation facilities, rural (%)	17.60	1990	37.46	43.26	2010	58.80	52.02	Slow	No

... = not available, ADB = Asian Development Bank, CFC = chlorofluorocarbon, CO<sub>2</sub> = carbon dioxide, ODP = ozone depleting potential, PPP = purchasing power parity. Sources: ADB. 2013. *2012 Development Effectiveness Review*. Manila.

**Go to Top**

## SUPPLEMENTARY APPENDIX 7: RESIDENT MISSION QUESTIONNAIRE RESULTS—SUMMARY TABLES

### Part A. Assessment of ADB's support for achieving all MDGs in the country

	1. Is there a focal point for the MDGs at the RM?		2. Does the Government have a special plan for MDG attainment?	
	Number	%	Number	%
No	22	76	2	7
Yes	7	24	27	93
Total	29	100	29	100

	3. If so, has the RM been involved/ consulted in the development/ implementation of the plan?		4. Did MDG attainment feature as a central part of recent CPS discussions?	
	Number	%	Number	%
No	3	11		
Minimally	3	11	4	14
Moderately	9	32	8	28
Substantially	7	25	16	55
Not sure	6	21	1	3
Total	28	100	29	100

### 5. Is there country demand for donor support in any of the following MDGs intervention areas?

	MDG 1		MDG 2		MDG 3		MDGs 4 and 5		MDG 6		MDG 7—water supply		MDG 7—sanitation	
	Number	%	Number	%	Number	%	Number	%	Number	%	Number	%	Number	%
No	6	21	5	17	5	17	3	10	2	7	1	3	0	0
Minimal	2	7	3	10	7	24	2	7	5	17	0	0	2	7
Substantial	16	55	18	62	15	52	21	72	18	62	28	97	27	93
Not sure	3	10	1	3	2	7	3	10	3	10	0	0	0	0
Not applicable	2	7	2	7	0	0	0	0	1	3	0	0	0	0
Total	29	100	29	100	29	100	29	100	29	100	29	100	29	100

[Go to Top](#)



**6. Did the Government request support from ADB in any of the following MDG areas?**

	MDG 1		MDG 2		MDG 3		MDGs 4 and 5		MDG 6		MDG 7—water supply		MDG 7—sanitation	
	Number	%	Number	%	Number	%	Number	%	Number	%	Number	%	Number	%
No	11	41	14	56	11	44	13	50	13	50	2	7	6	21
Minimal	0	0	0	0	5	20	3	12	3	12	3	10	1	3
Substantial	13	48	7	28	8	32	7	27	8	31	24	83	22	76
Not sure	1	4	2	8	1	4	3	12	1	4	0	0	0	0
Not applicable	2	7	2	8	0	0	0	0	1	4	0	0	0	0
Total	27	100	25	100	25	100	26	100	26	100	29	100	29	100

**7. To what degree did ADB respond to country demand in the MDG intervention areas?**

	MDG 1		MDG 2		MDG 3		MDGs 4 and 5		MDG 6		MDG 7— water supply		MDG 7— sanitation	
	Number	%	Number	%	Number	%	Number	%	Number	%	Number	%	Number	%
No	4	15	6	24	2	8	6	23	5	21	0	0	2	7
Minimal	0	0	1	4	6	24	4	15	1	4	4	14	2	7
Substantial	13	50	8	32	11	44	7	27	10	42	24	83	22	76
Not sure	0	0	1	4	1	4	2	8	1	4	0	0	0	0
Not applicable	9	35	9	36	5	20	7	27	7	29	1	3	3	10
Total	26	100	25	100	25	100	26	100	24	100	29	100	29	100

**8. If there was weak government demand, did ADB try to leverage for more demand in any of the following MDG intervention areas?**

	MDG 1		MDG 2		MDG 3		MDGs 4 and 5		MDG 6		MDG 7— water supply		MDG 7— sanitation	
	Number	%	Number	%	Number	%	Number	%	Number	%	Number	%	Number	%
No	3	12	6	24	1	4	8	32	6	24	4	15	4	15
Yes	2	8	2	8	9	35	1	4	2	8	6	23	6	23
Not sure	6	23	6	24	6	23	5	20	5	20	4	15	4	15
Not applicable	15	58	11	44	10	38	11	44	12	48	12	46	12	46
Total	26	100	25	100	26	100	25	100	25	100	26	100	26	100

**9. Is ADB involved in donor coordination in one or more of the following MDG areas?**

	MDG 1		MDG 2		MDG 3		MDG 4 and 5		MDG 6		MDG 7— water supply		MDG 7— sanitation	
	Number	%	Number	%	Number	%	Number	%	Number	%	Number	%	Number	%
No	6	24	8	32	3	11	7	28	8	35	1	4	3	11
Yes	14	56	11	44	21	75	12	48	10	43	25	89	23	82

**Go to Top**

	MDG 1		MDG 2		MDG 3		MDG 4 and 5		MDG 6		MDG 7— water supply		MDG 7— sanitation	
	Number	%	Number	%	Number	%	Number	%	Number	%	Number	%	Number	%
Not sure	3	12	3	12	3	11	4	16	3	13	2	7	2	7
Not applicable	2	8	3	12	1	4	2	8	2	9	0	0	0	0
Total	25	100	25	100	28	100	25	100	23	100	28	100	28	100

**10. Is there unmet Government demand (gap in assistance) for MDG support from donors, including ADB?**

	MDG 1		MDG 2		MDG 3		MDG 4 and 5		MDG 6		MDG 7— water supply		MDG 7— sanitation	
	Number	%	Number	%	Number	%	Number	%	Number	%	Number	%	Number	%
No	8	28	8	28	10	34	7	24	7	24	7	24	6	21
Yes	11	38	10	34	11	38	11	38	12	41	15	52	15	52
Not sure	9	31	10	34	7	24	11	38	8	28	7	24	8	28
Not applicable	1	3	1	3	1	3	0	0	2	7	0	0	0	0
Total	29	100	29	100	29	100	29	100	29	100	29	100	29	100

**11. In your view, did the country's commitment to the MDGs (if any) make a substantial difference to budgets and resources earmarked for the following MDG-related sectors?**

	MDG 1		MDG 2		MDG 3		MDG 4 and 5		MDG 6		MDG 7— water supply		MDG 7— sanitation	
	Number	%	Number	%	Number	%	Number	%	Number	%	Number	%	Number	%
No	3	10	3	10	4	14	3	10	4	14	4	14	4	14
Minimal	5	17	3	10	9	31	8	28	7	24	6	21	6	21
Substantial	15	52	17	59	9	31	13	45	11	38	14	48	14	48
Don't know	5	17	4	14	7	24	4	14	6	21	5	17	5	17
Not applicable	1	3	2	7	0	0	1	3	1	3	0	0	0	0
Total	29	100	29	100	29	100	29	100	29	100	29	100	29	100

**Go to Top**

**Part B. Assessment of ADB's support for MDG 7—Environmental Sustainability****1. Which of the MDG 7 targets/indicators are of relevance to your country of operation?  
Mark all that apply.**

	Number	%
Target 7A. Integrating the principles of sustainable development into country policies and programs and reversing the loss of environmental resources	16	57
Target 7B 1. Proportion of land area covered by forest	22	79
Target 7B 2. CO <sub>2</sub> emissions, total, per capita and per \$1 GDP (PPP)	17	61
Target 7B 3. Consumption of ozone-depleting substances	14	50
Target 7B 4. Proportion of fish stocks within safe biological limits	17	61
Target 7B 5. Proportion of total water resources used	20	71
Target 7B 6. Proportion of terrestrial and marine areas protected	19	68
Target 7B 7. Proportion of species threatened with extinction	17	61
Target 7C 8. Proportion of population using an improved drinking water source	26	93
Target 7C 9. Proportion of population using an improved sanitation facility	26	93
Target 7D. By 2020, achieving improvement in the lives of at least 100 million slum dwellers	12	43

**2. How do you consider the capacity of institutions in the country dealing with the environment?**

	Number	%
Very Weak	3	11
Weak	20	71
Strong	3	11
Hard to say	2	7
Total	28	100

**3. How do you consider enforcement of environmental legislation and regulations in the country?**

	Number	%
Not effective	4	14
Less than effective	16	57
Effective	7	25
Hard to say	1	4
Total	28	100

**4. To what extent does environmental sustainability feature in ADB's policy dialogue with the Government?**

	Number	%
To some extent	9	32
Substantially	16	57
Very seriously	3	11
Total	28	100

**5. To what extent does country environment analysis (CEA) or the country environment note (CEN) reflect country's environmental priorities?**

	Number	%
Not at all	2	7
To some extent	7	26
Substantially	18	67
Total	27	100

**Go to TOP**

**6. Does the CEA or CEN adequately capture MDG 7 and its targets?**

	Number	%
No	3	11
Yes	24	89
Total	27	100

**7. Which targets are important in ADB's dialogue with the Government? Mark all that apply.**

	Number	%
Integrating the principles of sustainable development into country policies and programs and reversing the loss of environmental resources	27	96
Reducing biodiversity loss significantly	18	64
Halving the proportion of people without sustainable access to safe drinking water and basic sanitation	24	86
By 2020, achieving improvement in the lives of at least 100 million slum dwellers	7	25
Other issues	3	11

**8. What have been key challenges/constraints in ADB operations in the context of MDG 7?**

	Number	%
Lack of adequate guidance/instructions from ADB	3	11
Lack of clarity of MDG 7 indicators	3	11
Not a national priority	4	15
Lack of funds	10	37
Not a priority for the development partners	1	4
Low institutional capacity	21	78
Others	7	26

**9. What recommendations would you have to improve ADB operations in the sector?**

	Number	%
Policy and strategy should improve	12	48
Sector interventions should improve	18	72
Classification of projects should improve	5	20
Staff capacity and staff skill mix should improve	22	88
Others	3	12

MDG = Millennium Development Goal.

Source: IED study team. Based on a survey of 29 ADB Resident Missions.

**Go to TOP**

## SUPPLEMENTARY APPENDIX 8: STATISTICAL ANALYSIS OF MDGS—A NOTE ON PROJECTION METHODOLOGY<sup>1</sup>

---

1. The study undertook an extensive statistical analysis to examine the trend in MDG targets and indicators. The pattern before the MDGs (historical trend) was compared with the required trend to determine the impact of adopting MDGs and whether goals were likely to be achieved or not. Pre-MDG data mostly related 1990-2000 while the post-MDG data related to the 2000-2010 period.

2. Similar statistical exercises conducted elsewhere have noted data deficiency widely, and the present exercise also encountered these limitations. Data were sparse, sporadic and inconsistent across countries. Time series for the complete period under reference were not available. The fact that different MDG targets were specified differently, i.e., absolute numbers or ratios, made the exercise more complex and results tentative. As noted by Sumner and Lawo,<sup>2</sup> national MDG reports in Asia suggest that for key MDGs, between 6–19 of 27 indicators (between 22% to 70%) they studied are on-track, depending upon which indicator was taken.

3. In this study, Holt-Winters' forecasting method is used for obtaining the estimated trajectories of the MDG indicators for each country. This involves having a forecasting equation:

$$\text{YHAT}_{t+1} = a_t + b_t t$$

4. Where YHAT is the forecast for an original series  $Y_t$ ,  $a_t$  is a mean that drifts over time; and  $b_t$  is a coefficient on time that also drifts. Given the time series  $Y_t$ , the smoothing parameters  $\alpha$  and  $\beta$ , and the starting values  $a_0$  and  $b_0$ , the updating equations are:

$$\begin{aligned} a_t &= \alpha Y_t + (1-\alpha)(a_{t-1} + b_{t-1}) \\ b_t &= \beta(a_t + a_{t-1}) + (1-\beta)(b_{t-1}) \end{aligned}$$

5. This method can be viewed as an extension of double-exponential smoothing with two parameters, which may be explicitly set or chosen to minimize the in-sample sum-of-squared forecast errors. The smoothing parameters are chosen such that they minimize the in-sample sum-of-squared forecast errors plus a penalty term that helps to achieve convergence when one of the parameters is too close to the boundary. This method was applied to the indicator in either logit or log form to yield the expected trajectories, with the resulting forecast re-transformed into the original units. Logit transformations were used for rates and proportions, while log transformations were used for other indicators. This project approach is considered simple and suitable enough to take into account initial conditions.

6. For some projections, however, other methods were used. Following Klasen and Lange<sup>3</sup> a model based on a logistic growth curve was used, with a common transition path for each country but with different initial values. This approach is clearly superior as it takes into account initial conditions. Projections were done for three MDG indicators, viz., under-five mortality, primary completion, and gender equality in education, using this approach.

---

<sup>1</sup> IED Study Team based on J.R. Albert. 2012. Does International Goal-Setting Work at the Asia and Country Level? Draft.

<sup>2</sup> A. Sumner and T. Lawo. 2010. The MDGs and Beyond: Pro-Poor Policy in a Changing World. *EADI Policy Paper Series*. Bonn: European Association of Development Research and Training Institutes. March.

<sup>3</sup> S. Klasen and S. Lange. 2011. Getting Progress Right: Measuring Progress Towards the MDGs Against Historical Trends Available at [http://www2.vwl.wiso.uni-goettingen.de/courant-papers/CRC-PEG\\_DP\\_87.pdf](http://www2.vwl.wiso.uni-goettingen.de/courant-papers/CRC-PEG_DP_87.pdf)

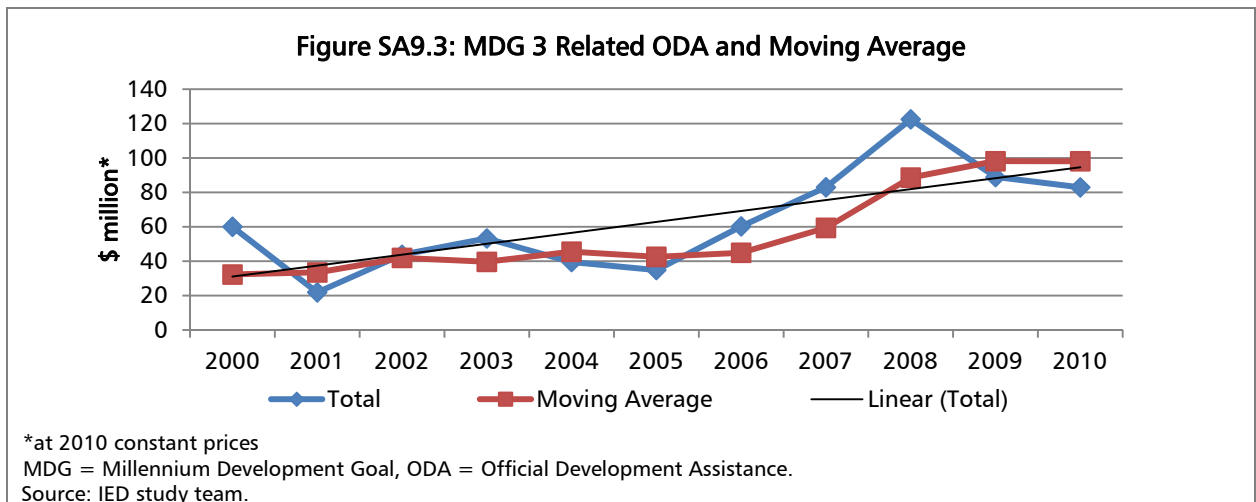
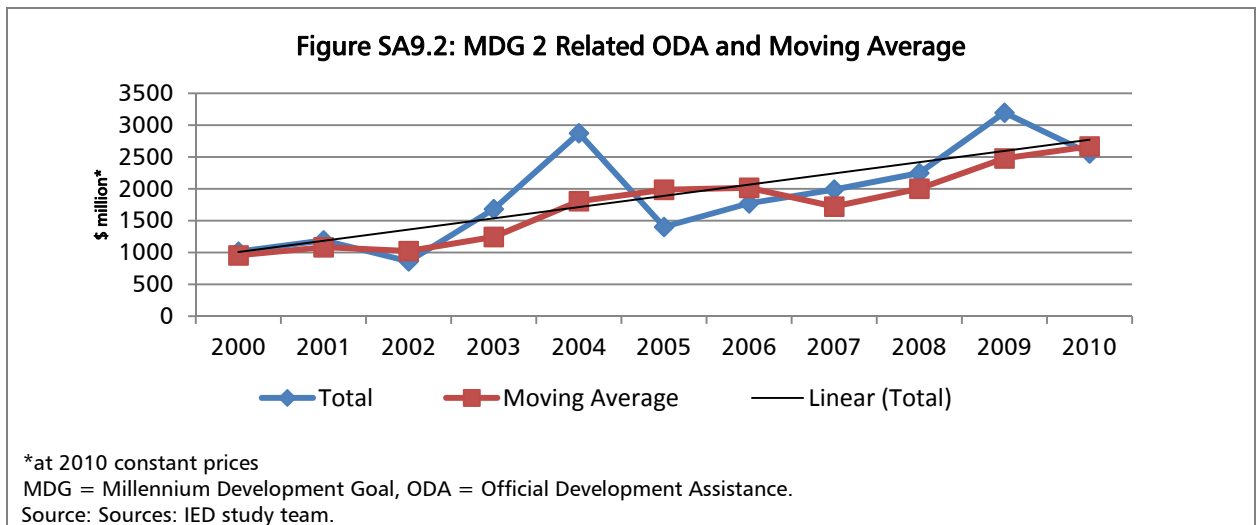
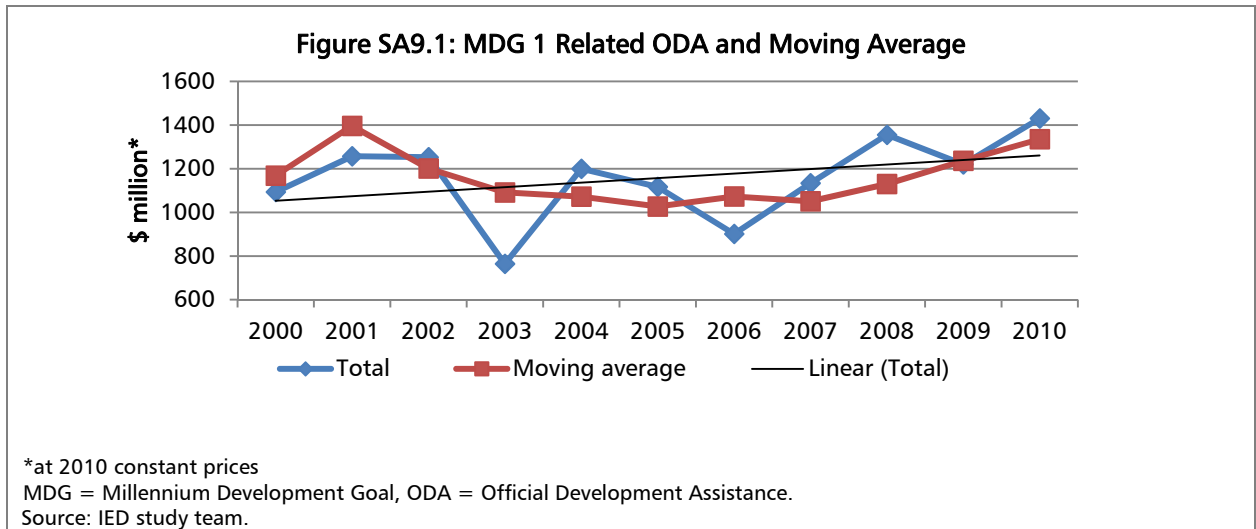
7. Similarly, the use was made of Kenny and Sumner<sup>4</sup> indicator  $Y_t$  at time  $t$  (excluding the base period) on the ten year lag  $Y_{t-10}$  and its squared term  $(Y_{t-10})^2$  with the latter capturing the curvature in the historical path. For some indicators, viz., child mortality rate and maternal mortality rate, a log transformation was used instead of the squared term into the regression equation.

8. Statistical tests of significance indicated that seven of the selected MDG indicators have significantly different distribution (poverty rate, cohort survival rate, cohort survival rate for boys, cohorts survival rate for girls, skilled personnel, tuberculosis incidence, improved drinking water source) from the historically expected trend. The performance of net enrolment ratio is also better but data are sparse.

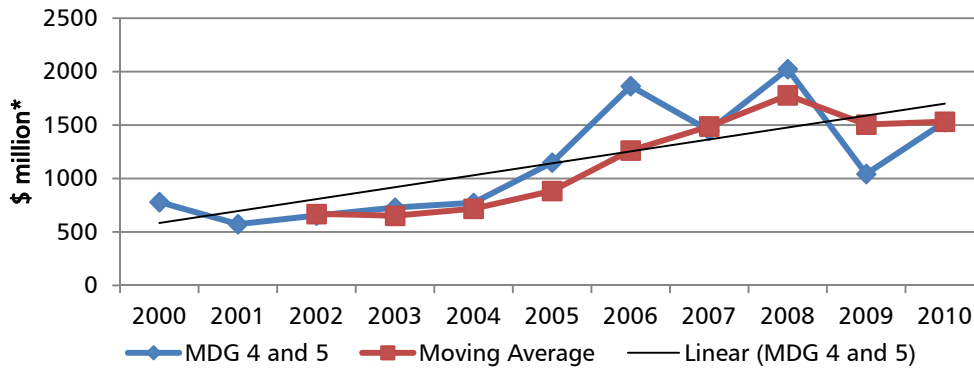
---

<sup>4</sup> C. Kenny and A. Sumner. 2011. More Money or More Development: What have the MDGs Achieved? Center for Global Development Working Paper 278 December 2011 (Available at [http://www.cgdev.org/files/1425806\\_file\\_Kenny\\_Sumner\\_MDGs\\_FINALpdf](http://www.cgdev.org/files/1425806_file_Kenny_Sumner_MDGs_FINALpdf))

## SUPPLEMENTARY APPENDIX 9: OFFICIAL DEVELOPMENT ASSISTANCE BY MDG

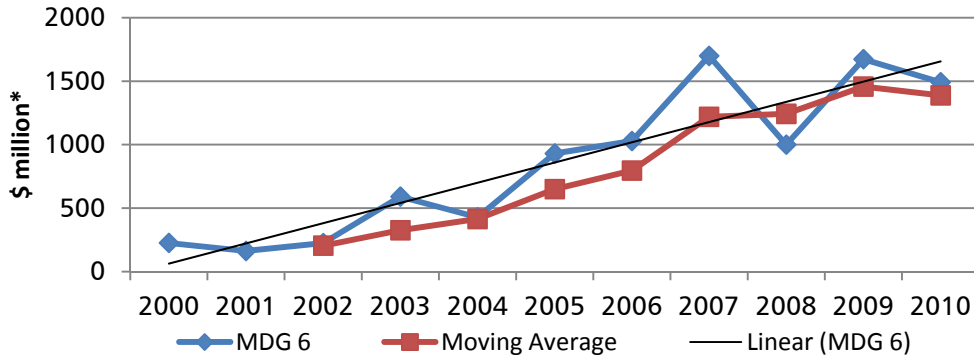


**Figure SA9.4: MDG 4 and 5 Related ODA and Moving Average**



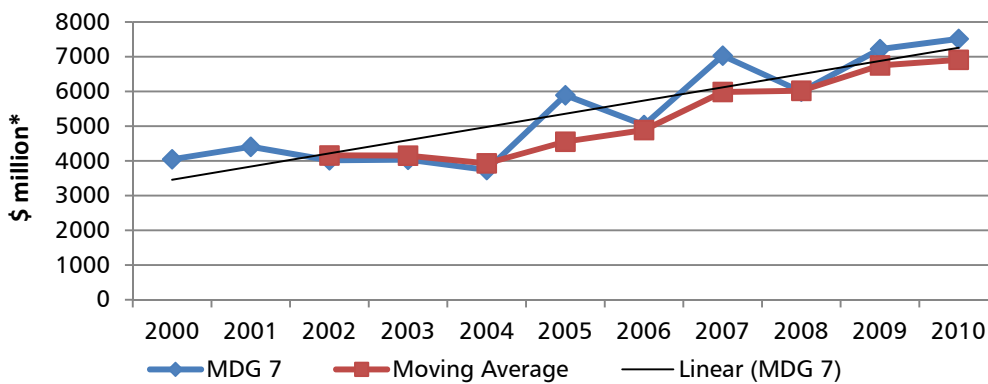
\*at 2010 constant prices  
 MDG = Millennium Development Goal, ODA = Official Development Assistance.  
 Source: IED study team.

**Figure SA9.5: MDG 6 Related ODA and Moving Average**



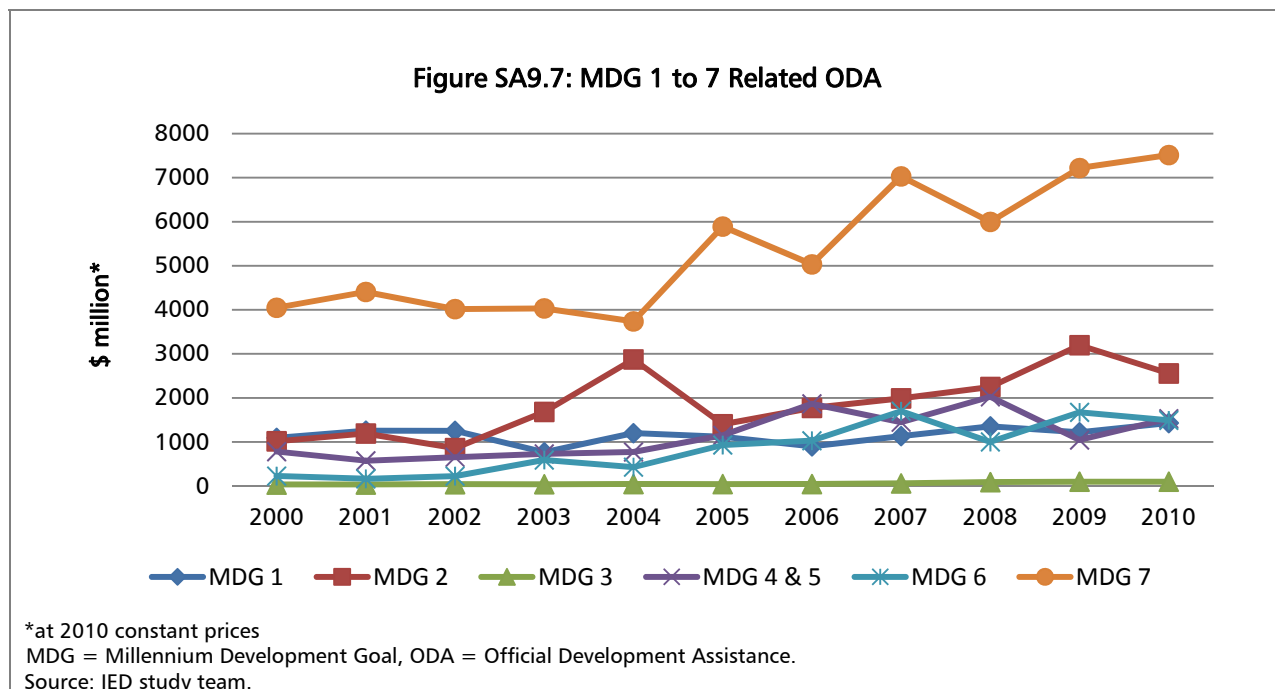
\*at 2010 constant prices  
 MDG = Millennium Development Goal, ODA = Official Development Assistance.  
 Source: IED study team.

**Figure SA9.6: MDG 7 Related ODA and Moving Average**



\*at 2010 constant prices  
 MDG = Millennium Development Goal, ODA = Official Development Assistance.  
 Source: IED study team.





**Go to TOP**

## SUPPLEMENTARY APPENDIX 10: ACTUAL VS. EXPECTED PERFORMANCE OF ADB'S DMCS

1. At the most aggregate level, no strong trend could be identified from the data suggesting that, in the period after the MDGs were adopted, overall performance had improved more than could have been expected absent the MDGs; nor is there evidence suggesting a worsening situation because of the MDG initiative. Nevertheless, Table 9 shows that for some indicators, the number of countries with better than projected performance is higher than for others, which may point to the international initiative having had more traction on some indicators than others. For instance this is the case for the crucial indicators of population below \$1.25 a day, school enrolment, gender parity in primary schools, antenatal care, maternal mortality, tuberculosis incidence, and population using improved drinking water. Final conclusions may be premature given the lead time needed for targets to be delivered, and the sometimes relatively old and questionable progress data available for analysis. Progress that may have been made by 2012 in most cases has not been measured yet, hence is not showing up in the analysis. The previous section did indicate that initiatives had been taken at country level, but that these may have not yet have yielded effects large enough for showing up in the data, due to their limited nature (insufficient resources), or lack of effective implementation capacity.

**Table SA10: Number of Countries in Asia and the Pacific  
by Performance in Select MDG Indicators in Relation to Projected Levels of Indicators  
as per Historical Trend, 1990–2000**

MDG Indicators	Actual Performance vs. Expected Levels according to Historical Trend				Total
	Less than expected <sup>a</sup>	Nearly the same as expected <sup>b</sup>	Better than expected <sup>a</sup>	Too few data or no data	
1.1 Proportion of population below \$1(PPP) per day	2		12 <sup>c</sup>	31	45
1.5 Employment-to-population ratio	14	5	15	11	45
1.8 Underweight - Children Under 5 Years Old (%)	5	1	4	35	45
2.1 School enrollment, net primary, total	8	2	13	22	45
2.1a School enrollment, net primary, female				45	45
2.1b School enrollment, net primary, male	7	1	10	27	45
2.2 Pupils Starting Grade 1 who reach last grade of primary (%)	20	3	1 <sup>c</sup>	21	45
2.2a Pupils Starting Grade 1 who reach last grade of primary (%), boys	19	1	2 <sup>c</sup>	23	45
2.2b Pupils Starting Grade 1 who reach last grade of primary (%), girls	18	3	0 <sup>c</sup>	24	45
3.1a Gender Parity Index in primary level enrolment	11	0	17	17	45
3.1b Gender Parity Index in secondary level enrolment	22	0	13	10	45
3.1c Gender Parity Index in tertiary level enrolment	15	2	8	20	45

**Go to TOP**

MDG Indicators	Actual Performance vs. Expected Levels according to Historical Trend				Total
	Less than expected <sup>a</sup>	Nearly the same as expected <sup>b</sup>	Better than expected <sup>a</sup>	Too few data or no data	
4.1 Mortality, under-five, per thousand live births		42	1	2	45
4.2 Mortality, infant (0-1), per thousand live births		42		3	45
5.1 Mortality, maternal, per 100,000 live births	9	10	15	11	45
5.2 Births attended by skilled health personnel	14	1	3 <sup>c</sup>	27	45
5.5a Antenatal care coverage, at least one visit (% of women aged 15-49)	2		6	37	45
6.1 HIV prevalence among population aged 15-49 years		8	2	35	45
6.9a Tuberculosis, incidence rate	10	13	21 <sup>c</sup>	1	45
6.9b Tuberculosis, prevalence rate	18	1	25	1	45
7.2a Carbon Dioxide emissions	23	0	18	4	45
7.6 Proportion of terrestrial and marine areas protected	12	24	6	3	45
7.8a Proportion of the population using improved drinking water sources, total	9	10	18 <sup>c</sup>	8	45
7.9a Proportion of the population using improved sanitation facilities, total	14	8	14	9	45
<b>Overall (weighted average)</b>	<b>10</b>	<b>10</b>	<b>10</b>	<b>16</b>	<b>45</b>

MDG = Millennium Development Goal.

<sup>a</sup> for rates of rare events such as mortality rates by at least 5 per 10 thousand people from expected; for other rates and proportions, e.g., poverty rate, by at least 0.5 percentage points from expected; for other indicators, by at least 0.5 units from expected.

<sup>b</sup> for rates of rare events such as mortality rates within 5 per 10 thousand people from expected; for other rates and proportions, e.g., poverty rate, within 0.5 percentage points from expected; for other indicators, by at least 0.5 units from expected.

<sup>c</sup> Number of better than expected values is significantly different from the number of less than expected values.

Source: IED study team.

2. While the impact of the MDGs on development outcomes cannot be established in a rigorous sense, the case study evidence suggests that goal-setting may have had positive effects on the performance of the MDG indicators. UN documents also confirm some positive effects, although these have not been uniform across the goals, and they have varied considerably across countries, with some countries showing substantial progress compared to their projected historical trends.

3. Trends in progress toward MDGs may have been negatively affected by a number of crises (e.g., global financial crisis, price hikes, natural disasters and conflicts). Disentangling these effects is not simple in the absence of appropriate data. As mentioned, underperforming indicators may also be attributed to low/high starting points, depending on whether the MDG indicator is positive/negative.<sup>1</sup> For future goals it will be better if countries determined their own baselines and then set their targets

<sup>1</sup> S. Klasen and S. Lange. 2011. Getting Progress Right: Measuring Progress Towards the MDGs Against Historical Trends. *Courant Research Centre Poverty, Equity and Growth Discussion Paper*. No. 87. Göttingen: Courant Research Centre.

more meaningfully. Perhaps for the new post-2015 goals, some guidance can be given about expected and desired growth rates for indicators, so that a target can be set based on a given baseline and a realistic and yet aspirational growth rate. More realistic targets linked to existing baseline conditions and historical trends would be an improvement over the previous targets set. As MDG performance of countries often even depends on the subregions to which these countries belong, setting regional and even subregional targets would allow for more realistic and meaningful targets.

**Go to TOP**